

MyModels

Fixed Wing Fighter

What is MyModels - Fixed Wing Fighter (FWF)?

MyModels - FWF is a Configurable High Fidelity Modelling Toolkit (MTK) empowering Virtual World Modellers to rapidly and accurately create complex fighter aircraft types. With ONLY ONE MyModels - FWF MTK, modellers can produce Lockheed Martin F-16, Boeing F/A-18E, Cessna, Dassault Mirage 2000, Eurofighter Typhoon, Mikoyan MiG-29 and many more physics based models that plug right out of the box into VT MÄK VR-Forces without the need for any coding or scripting.

MyModels - FWF uses advanced algorithms and mathematical models that are validated with stringent in-house processes such that all fixed wing fighters generated by the MTK fly with high fidelity accuracy. Besides dynamics accuracy, all fixed wing fighters generated by FWF MTK come with complex behaviours that totally support CGF usage. On top of that, FWF MTK also includes realistic actuators enabling all the generated fixed wing fighters to be flown in a 'man in the loop' application style.



To get even more out of MyModels - FWF, why not take advantage of MyModels Professional Services that allows users of the FWF MTK to further increase the resolution of modelling fidelity. Additional services include the ability to add in customised complex behaviours or simulink packages, 3D visuals, specific aircrafts creation and can even be exported to other open standards or proprietary simulation engines.

Antycip Simulation is committed to the support of MyModels - FWF and is available for discussions on flexibility of usage of FWF MTK.

ONE
MTK



MANY
HIGH FIDELITY
MODELS

MyModels - FWF

MyModels - FWF comes with an intuitive user friendly Graphical User Interface (GUI) for users to rapidly generate & reuse models. In a few clicks using windows menus, users can update and directly enter physical and graphical parameters for fixed wing fighter and watch in real time as the MTK generates the aerodynamic properties of flight model and other combat characteristics and behaviour of model.

Configurable parameters include:

- General
- Sensor Signature
- Load Configuration
- Fuel
- Aerodynamics
- Propulsion
- Landing Gear

MyModels - FWF supports VR-Forces tasks such as:

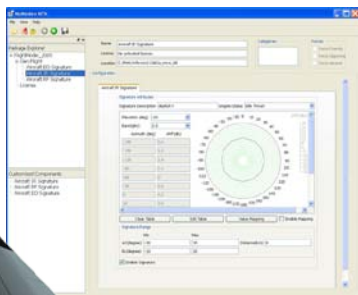
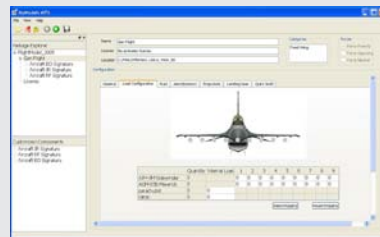
- Follow Entity
- Move Along Route
- Move To Altitude
- Move To Location
- Move To Waypoint
- Patrol Between
- Patrol Along Route

MyModels - FWF also provides additional new tasks:

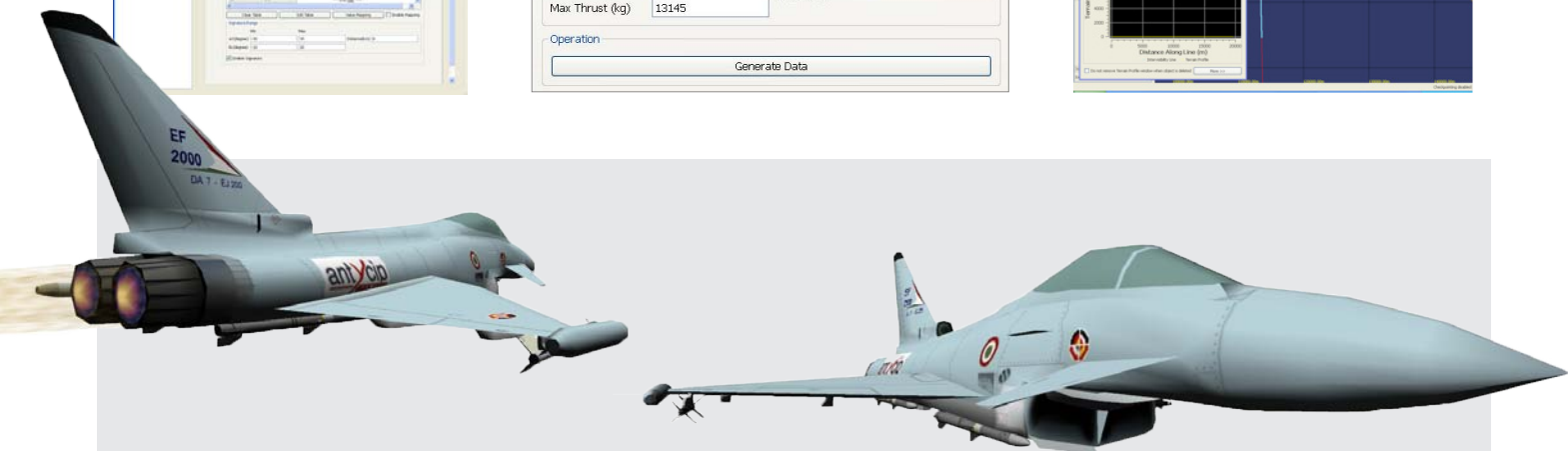
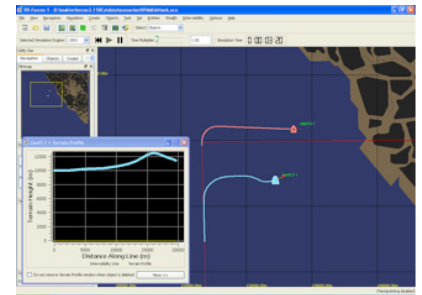
- Ordered Manoeuvre
- Ordered Heading
- Ordered Roll
- Ordered Climb/Dive
- Ordered Altitude
- Engine Thrust
- Navigation Effect
- Jettison
- Wind Effect

MyModels Professional Services supporting FWF MTK includes:

- MTK Customisation
- Modelling
- Training and Consulting
- User Support



Aircraft Description			
Flight Kinematics Actuator			
Aircraft Basic Properties			
Empty Mass (kg)	7890	Wing Area (m ²)	27.870912
Aircraft Length (m)	15.02	Wing Span (m)	9.144
Propulsion Properties (engines are assumed at aft location)			
Military Thrust (kg)	8074	Number of Engines (max of 4)	1
Max Thrust (kg)	13145		
Operation			
<input type="button" value="Generate Data"/>			



For more information about MyModels and MyModels - FWF, please visit www.antycipsimulation.com or email mymodels@antycipsimulation.com